



Solideal Hauler SKZ

Tires for Skid Steer Loaders

We Are All About Getting the Job Done. **For Less.**

The Solideal Hauler SKZ features a unique, non-directional, extra-deep tread that provides an ideal tire solution for heavy-duty, mixed surface operations. That's productivity. That's our Lowest Operating Cost Solution (LOCS).



Non-Directional Extra Deep Tread

- Massive tread depth for improved tread life and resistance to punctures
- Ideal for operation on mixed surfaces



Wide Sidewall

- Provides superior side impact resistance
- 2-3x more rubber than standard tires

Massive Lug-To-Void Ratio

- Excellent tread life, durability and stability



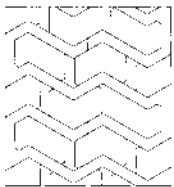


Additional Facts About the Solideal Hauler SKZ Tires for Skid Steer Loaders

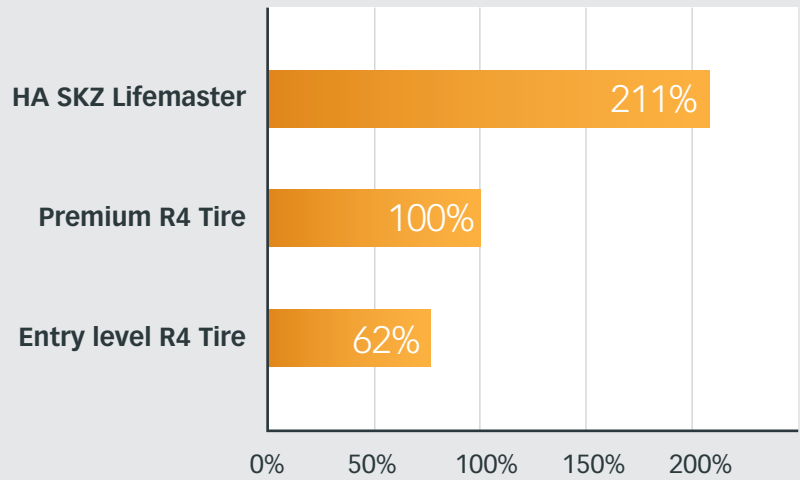
Tire Specifications

TIRE SIZE	PR	RIM SIZE		ACTUAL TIRE DIMENSIONS [mm] [inch]			LOAD INDEX	SPEED SYMBOL	TRA CODE	INFLATION PRESSURE [bar] [PSI]	MAXIMUM TIRE LOAD [kg] [lb]		
		Recommended	Alternative	O.D.	O.W.	O.T.D. [mm] [32nd]					Static	8 km/h 5 mph	16 km/h 10 mph
31x15.5-15	8	13.00	13LB	777	384	24.0	126	A2	L4	3.10	2670	1690	1340
				30.6	15.1	30				44	5900	3750	2950
10-16.5	10	8.25	-	786	275	31.0	134	A2	L4	5.25	3380	2140	1690
				30.9	10.8	39				75	7450	4700	3750
12-16.5	12	9.75	-	831	321	35.0	145	A2	L4	5.60	4550	2880	2280
				32.7	12.6	44				80	10050	6350	5050
33x15.5-16.5	14	12.00	-	836	380	35.0	148	A2	L4	4.90	4980	3150	2490
				32.9	15.0	44				70	11000	6950	5500
14-17.5	14	10.50	-	932	352	45.0	155	A2	L4	5.60	6120	3875	3060
				36.7	13.9	57				80	13500	8550	6750

The Hauler SKZ's unique non-directional tread pattern and massive tread depth provides unmatched durability compared to standard tires.



Performance wear chart estimate



Authorized Distributor:

